

# p-TAK1 (S439) Antibody

Cat No.: SJ-AB3211



## Applications

### Reactive Species

Human, Mouse, Rat

### Positive Samples

Refer to Validation Data.

### Validated Applications

WB, IP

### Recommended Dilution

WB 1:1000-1:2000

IP 1:20-1:50

## Product Information

### Antibody Type

Recombinant Rabbit mAb

### Immunogen

A synthesized peptide derived from human TAK1 around the phosphorylation site of S439.

### Modification

Phosphorylated

### Isotype

Rabbit IgG

### Clone No.

N/A

### Purification Method

Affinity purification

### Form

Liquid

### Storage Buffer

Rabbit IgG in 10mM phosphate buffered saline, pH 7.4, 150mM sodium chloride, 0.05% BSA, 0.02% sodium azide and 50% glycerol.

### Storage Conditions

Store at +4°C for short term. Store at -20°C for long term. Avoid freeze/thaw cycle.

### Host

Rabbit

### Clonality

Monoclonal

### Conjugation

Unconjugated

### Concentration

N/A

## Background Information

### Function

Serine/threonine kinase which acts as an essential component of the MAP kinase signal transduction pathway. Plays an important role in the cascades of cellular responses evoked by changes in the environment.

### UniProt ID

O43318

### Organism

Human

### Recommended Name

N/A

### Short Name

N/A

### Alternative Names

MAP3K 7; MEKK7; Mitogen activated protein kinase kinase kinase 7; TAK1; TGF beta activated kinase 1; TGF1a;

### Gene ID

N/A

### Gene Name

N/A

### Calculated MW

67 kDa

### Observed MW

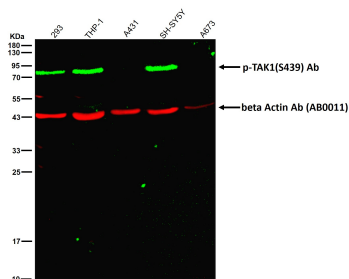
72 kDa

### Subcellular Location

N/A

## Validation Data

---



All lanes use the Antibody at 1:1K dilution for 1 hour at room temperature.

**NOTICE:** For research use only. Not for therapeutic or diagnostic purposes.

## Contact

---

For technical support and original validation data for this product please contact:

T: 400-018-6916

E: [support@sanjingbio.com](mailto:support@sanjingbio.com)

W: [www.sanjingbio.com](http://www.sanjingbio.com)